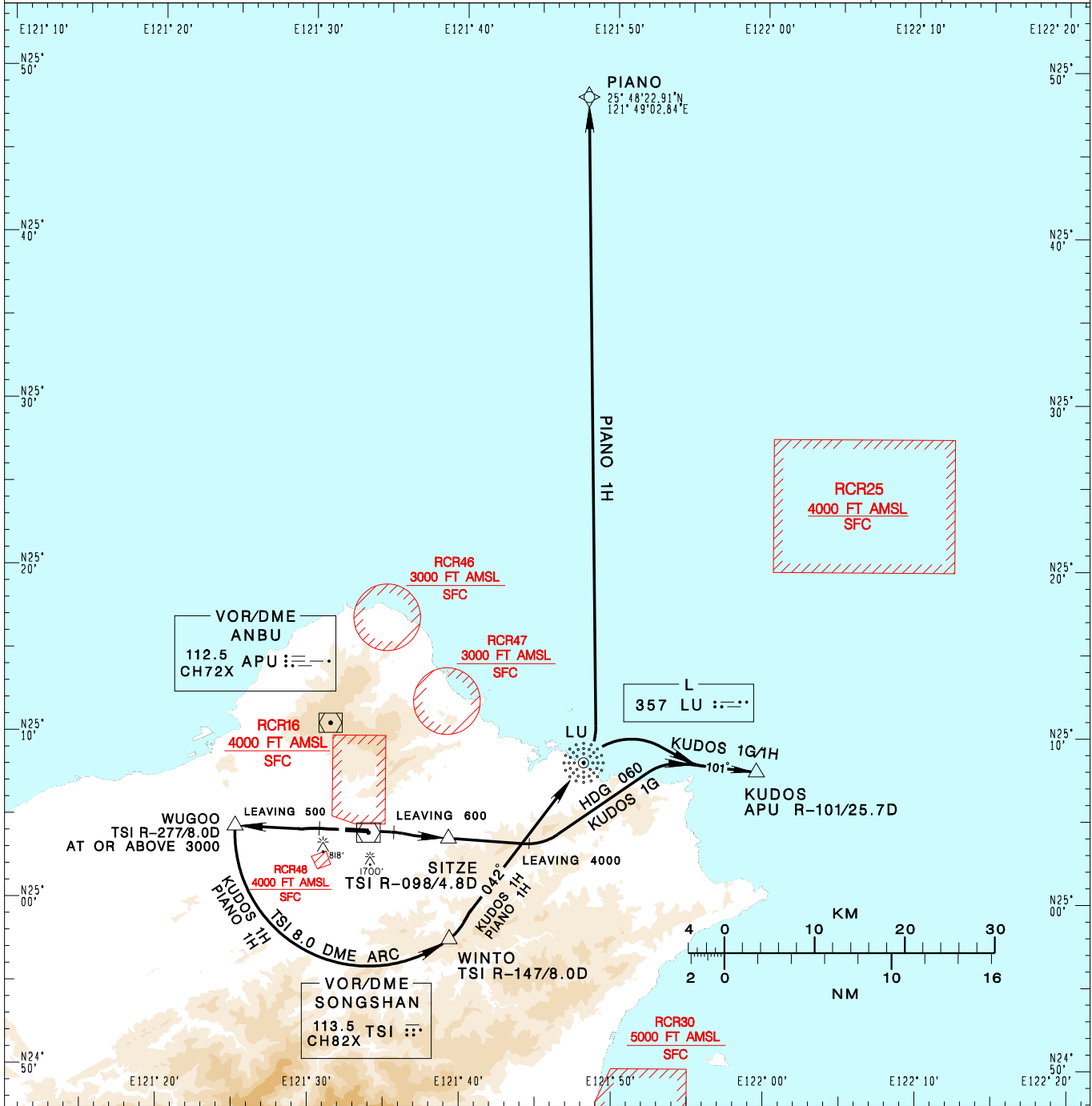


臺北/松山機場
TAIPEI/SONGSHAN AD

KUDOS 1G(RWY10)
KUDOS 1H(RWY28)/PIANO 1H(RWY28)

TAIPEI APP 119.7 119.6 125.1	SONGSHAN TWR 118.1	ATIS 127.4 341	VAR 5° W-2022 	 MSA ARP 25NM	
Apt Elev: 18'		Trans Level: FL130			Trans Alt: 11,000'
BEARINGS ARE MAGNETIC; DISTANCES ARE NAUTICAL MILES; ELEVATIONS, HEIGHTS IN FEET					



KUDOS ONE GOLF DEPARTURE
Climb on RWY HDG until 600ft, then track TSI R-098 to SITZE, continue TSI R-098 until 4000ft, then turn left HDG 060 to track APU R-101 to KUDOS.

KUDOS ONE HOTEL DEPARTURE
Climb on RWY HDG until 500ft, then track TSI R-277 to WUGOO, cross WUGOO at or above 3000ft, then turn left join TSI 8.0 DME arc to WINTO, then track LU 042BRG to LU, then turn right to track APU R-101 to KUDOS.

PIANO ONE HOTEL DEPARTURE
Climb on RWY HDG until 500ft, then track TSI R-277 to WUGOO, cross WUGOO at or above 3000ft, then turn left join TSI 8.0 DME arc to WINTO, then track LU 042BRG to LU, then direct to PIANO.

NOTE

- KUDOS 1G:
Minimum climb gradient required:
7.0%(426ft/NM) until 4000ft.
- KUDOS 1H:
Minimum climb gradient required:
7.0%(426ft/NM) until WUGOO.
- PIANO 1H:
Minimum climb gradient required:
7.0%(426ft/NM) until WUGOO.
- ATS surveillance required.
- Caution high terrain around airport.
- A 1700ft-high BLDG at 2.1NM south of THR 28.
- A 818ft-high BLDG at 2 NM SW of THR 10.

CHANGES: NEW CHART